

FED. DIST. NO.	STATE	FED. AID PROJ. NO.	FISCAL YEAR	SHEET NO.	TOTAL SHEETS
6	ARK.	25-112	1934	1	7

INDEX OF SHEETS

Sheet No. 1	Drawing No. 3674	Titic Sheet
" " 2	" " 3675	Layout of Bridge No. 1858
" " 3	" " 3676	" " " " 1859
" " 4	" " 3677	" " " " 1860
" " 5	" " 2158	Details of 25'0" Standard I-Beam Span
" " 6	" " 3712	" " Beam Spans Br. No. 1859
" " 7	" " 2386	" " Bridge Name Plates

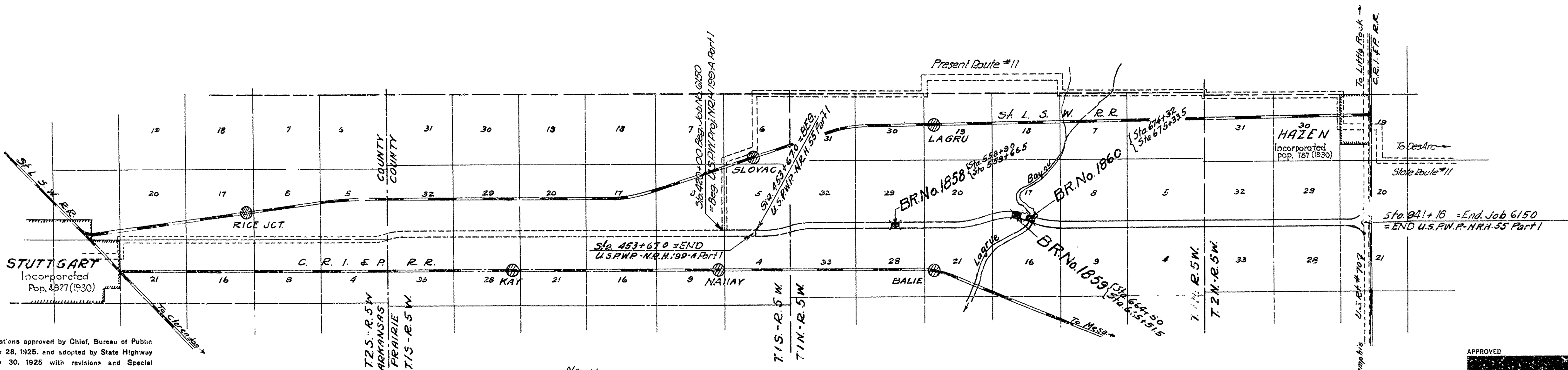
STATE OF ARKANSAS  
STATE HIGHWAY COMMISSION

PLAN OF PROPOSED BRIDGES  
HAZEN-ARK. COUNTY LINE ROAD  
PRAIRIE COUNTY  
ROUTE II SEC. 8  
JOB NO 6144  
FEDERAL AID PROJECT NO. NRH 55 PART 2

QUANTITIES

Item No.	91	Class "S" Concrete for Bridges	285.06	Cu. Yds.
" "	92	Reinforcing Steel for Bridges	54,416.	Lbs.
" "	93	Concrete Filing	1,638.	Lin. Ft.
" "	94	Concrete Railing for Bridges	584.	Lin. Ft.
" "	96	Structural Steel in Beam Spans	96,015	Lbs.
" "	SP	Bronze State Bridge Name Plates	6.	Each

Limits of Project: Ends of Bridges as shown below.



Specifications approved by Chief, Bureau of Public Roads, September 28, 1925, and adopted by State Highway Commission May 30, 1925 with revisions and Special Provisions as follows:

REVISIONS		
Pamphlet A	Revised Mar. 1st, 1931	Approved June 13, 1931
" L	Revised Feb. 10th, 1933	
" M	Revised Mar. 1st, 1931	Approved June 13, 1931
" N	Revised Oct. 1st, 1933	
" O	Revised Oct. 1st, 1933	
Labor (12 Sheets)		Approved Oct. 13, 1933

SPECIAL PROVISIONS		
Item	No. of Sheets	Date
Minimum Wage Scale	1	
Labor Preference	1	
Beginning & Prosecution of Work	2	1-12-34
Compliance with N.E.A. Codes Construction & Materials	1	
Bronze Project Marker Pls. & Bronze State Br. Name Pls.	1	8-10-33

Road and grading to be constructed under State Job No. 6150, U.S.P.W.P. Proj. No. NRH 55 Part 1

LAYOUT  
Scale: 1"=4000'

LENGTH OF PROJECT	=	279.5	Lin. Ft. = 0.052 Mi.
LENGTH OF BRIDGES	=	279.5	" " = 0.052 Mi.
LENGTH OF EMBANKMENT	=	0	
LENGTH OF JOB	=	279.5	" " = 0.052 Mi.

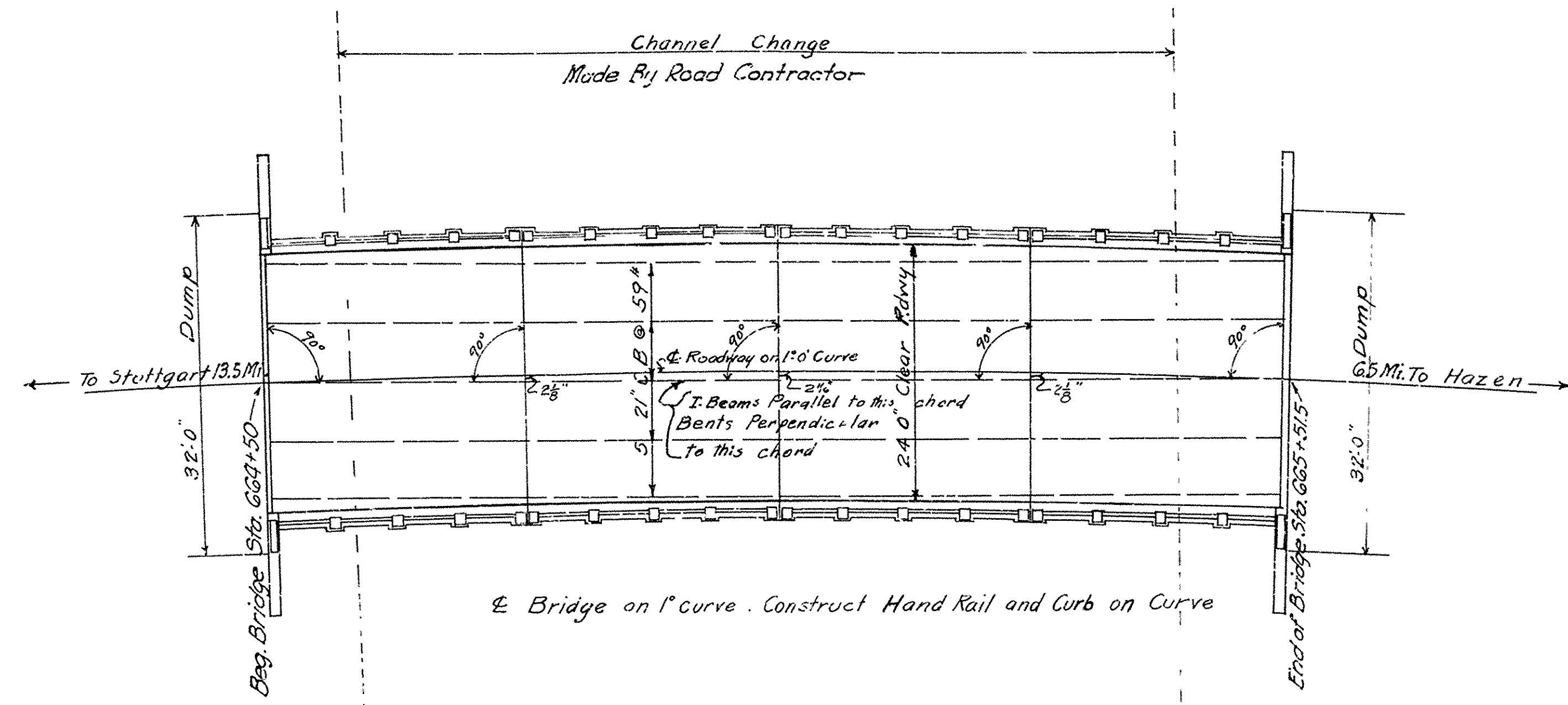
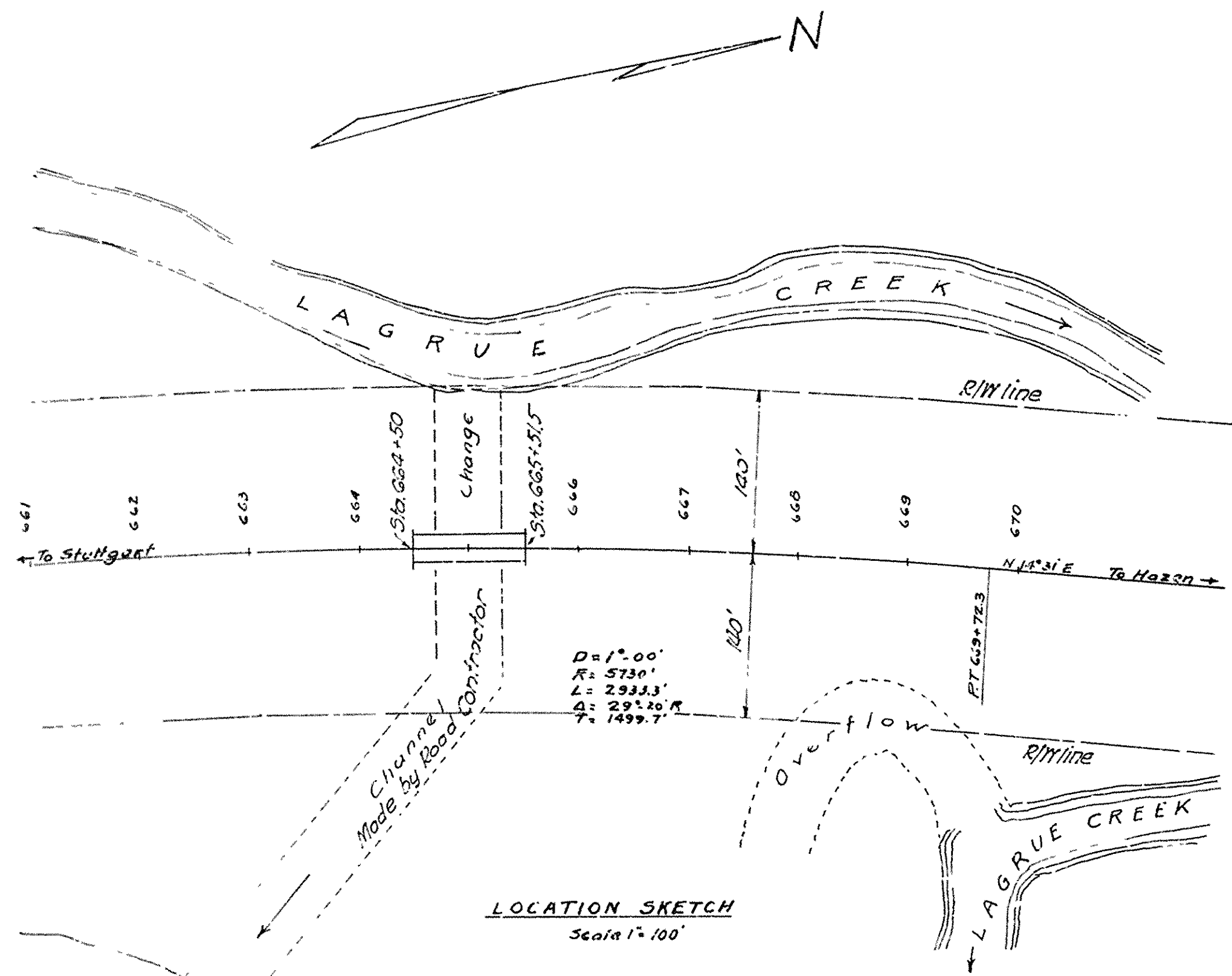
APPROVED  
CHIEF ENGINEER - U. S. BUREAU OF PUBLIC ROADS  
APPROVED  
DISTRICT ENGINEER - U. S. BUREAU OF PUBLIC ROADS  
APPROVED  
CHIEF - U. S. BUREAU OF PUBLIC ROADS  
APPROVED  
CHAIRMAN - STATE HIGHWAY COMMISSION  
APPROVED  
STATE HIGHWAY ENGINEER

M.B. Larrow  
BRIDGE ENGINEER

BRIDGES No. 1858-1859-1860  
DRAWING NO. 3674

FISCAL YEAR	STATE	PROJECT	NO.	SHEET NO.	TOTAL SHEETS
1934	ARK	15	N.R.H. 33 P.2	3	7

State Job No. G144

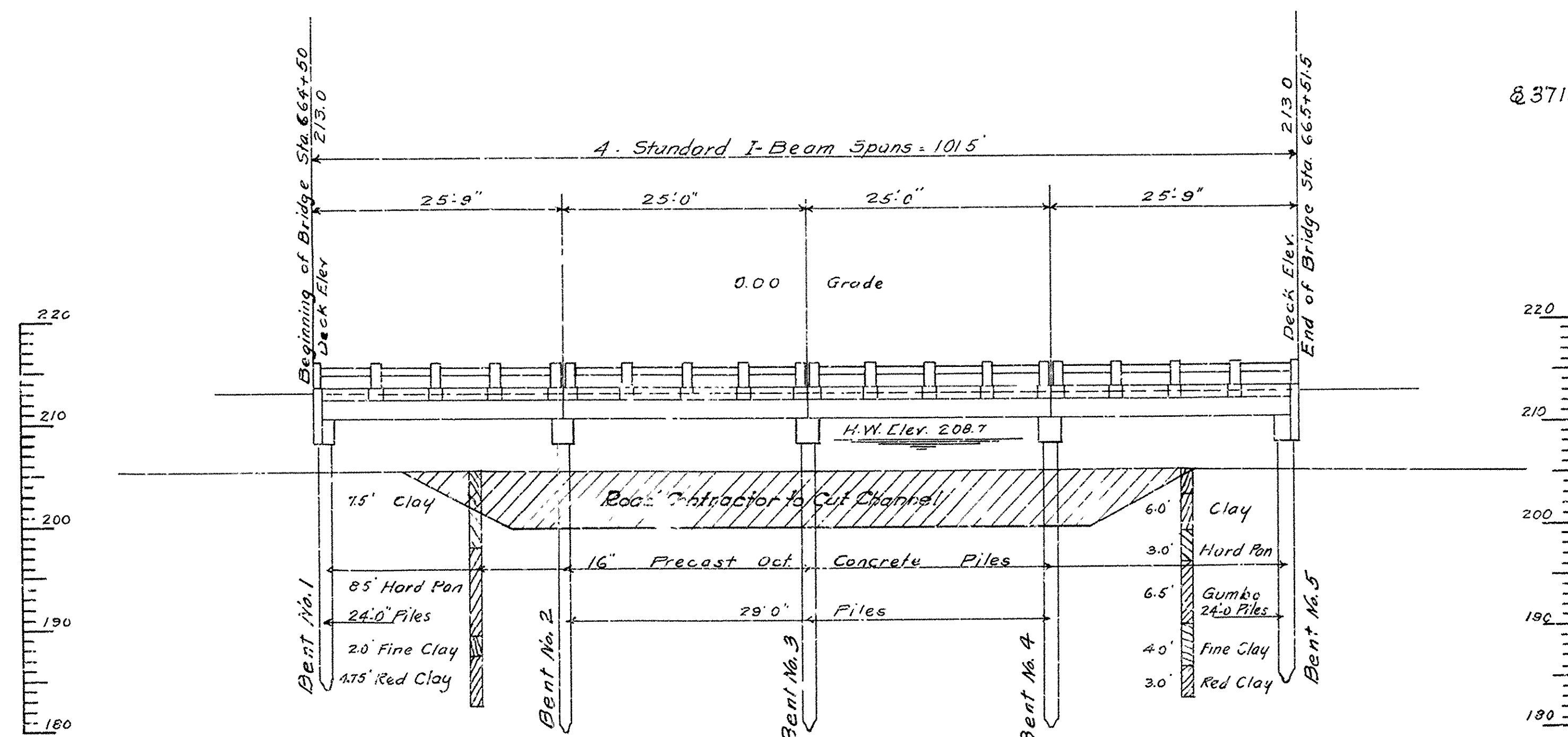


PLAN

QUANTITIES

ITEM No. 91	Class "S" Concrete for Bridges	106.60	Cu Yds.
" " 92	Reinforcing Steel for Bridges	19,564	Lbs.
" " 93	Concrete Piling	636	Lin. Ft.
" " 94	Concrete Railing for Bridges	211.33	Lin. Ft.
" " 96	Structural Steel in Beam Spans	31,948	Lbs.
" " SP	Bronze State Bridge Name Plates	2	Each

General Notes: Lengths of piling shown were assumed for estimating quantities only. Actual lengths are to be determined in field. For details of Bridge No. 1859 See Dwg. No. 2158 & 3712. Specifications: Arkansas Standard Road and Bridge Specifications adopted May 30, 1925 and Revised



ELEVATION

BM #72 Spike in Root 10 Persimmon Stump  
90' Left Sta. 663+25 Elev. 204.61

Drainage Area 42 sq. miles

LAYOUT OF  
BRIDGE AT STA. 664+50  
HAZEN-ARK COUNTY LINE ROAD  
PRAIRIE COUNTY

ROUTE 11 SEC. 8

ARKANSAS STATE HIGHWAY COMMISSION  
LITTLE ROCK, ARK

Drawn By: EGT Date: 2-14-34  
Traced By: EGT Date: 2-17-34  
Checked By: Date: \_\_\_\_\_  
Scale 1 in. = 10 ft.

BRIDGE No. 1859 DRAWING No. 3676

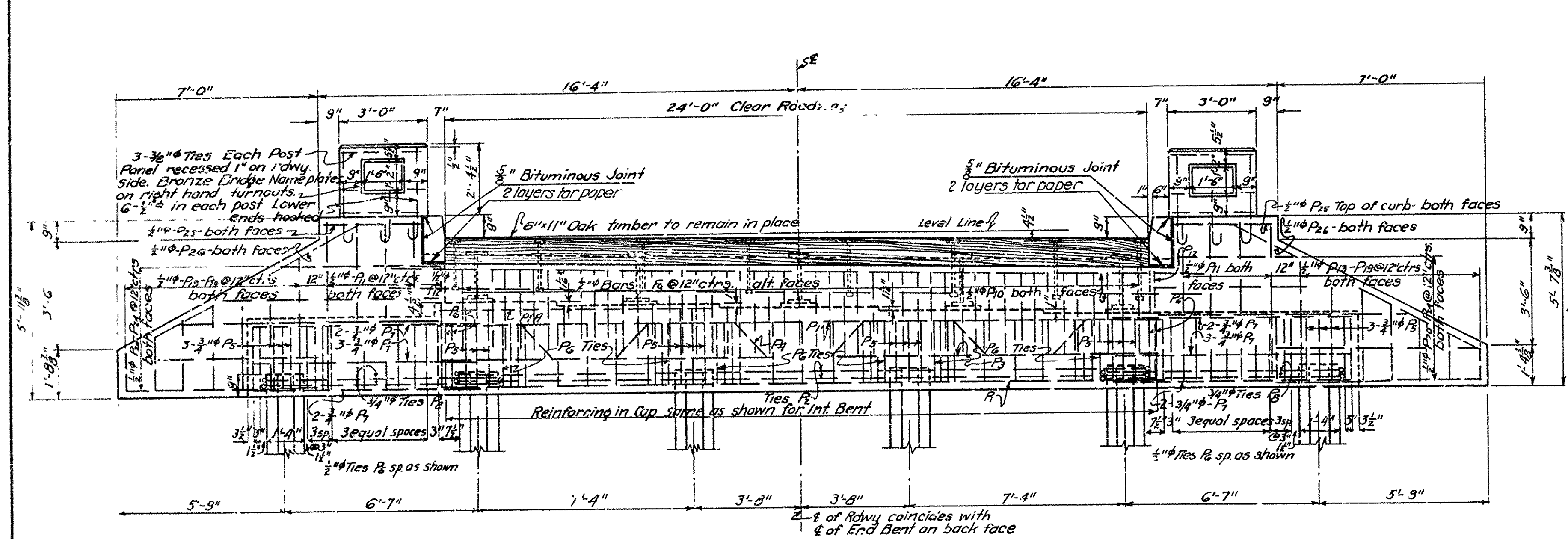
Beams shown Parallel  
& Bents ⊥ to long chord 5-22-34  
B.G.

N.B. Larver  
BRIDGE ENGINEER

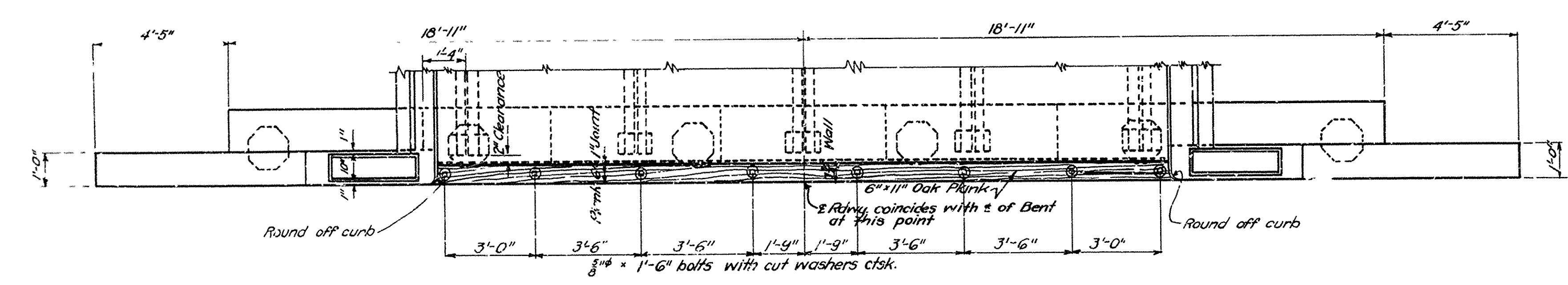


FISCAL YEAR	STATE	FEDERAL DISTRICT	PROJECT NUMBER	SHEET NUMBER	TOTAL SHEETS
1934	ARK.	6	NRH 35 PART 2	6	7

State Job No. G14.4

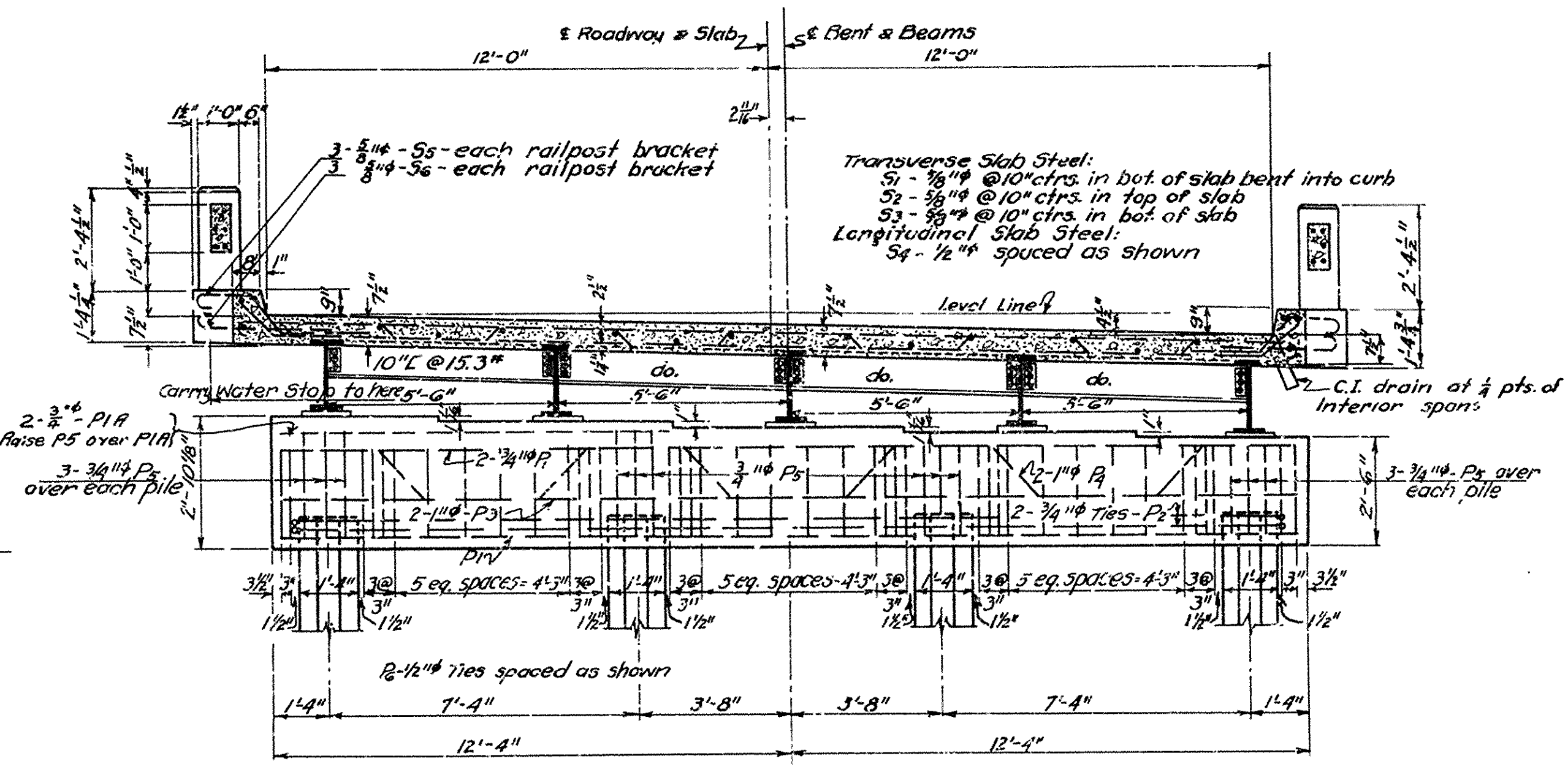


REAR ELEVATION END BENT

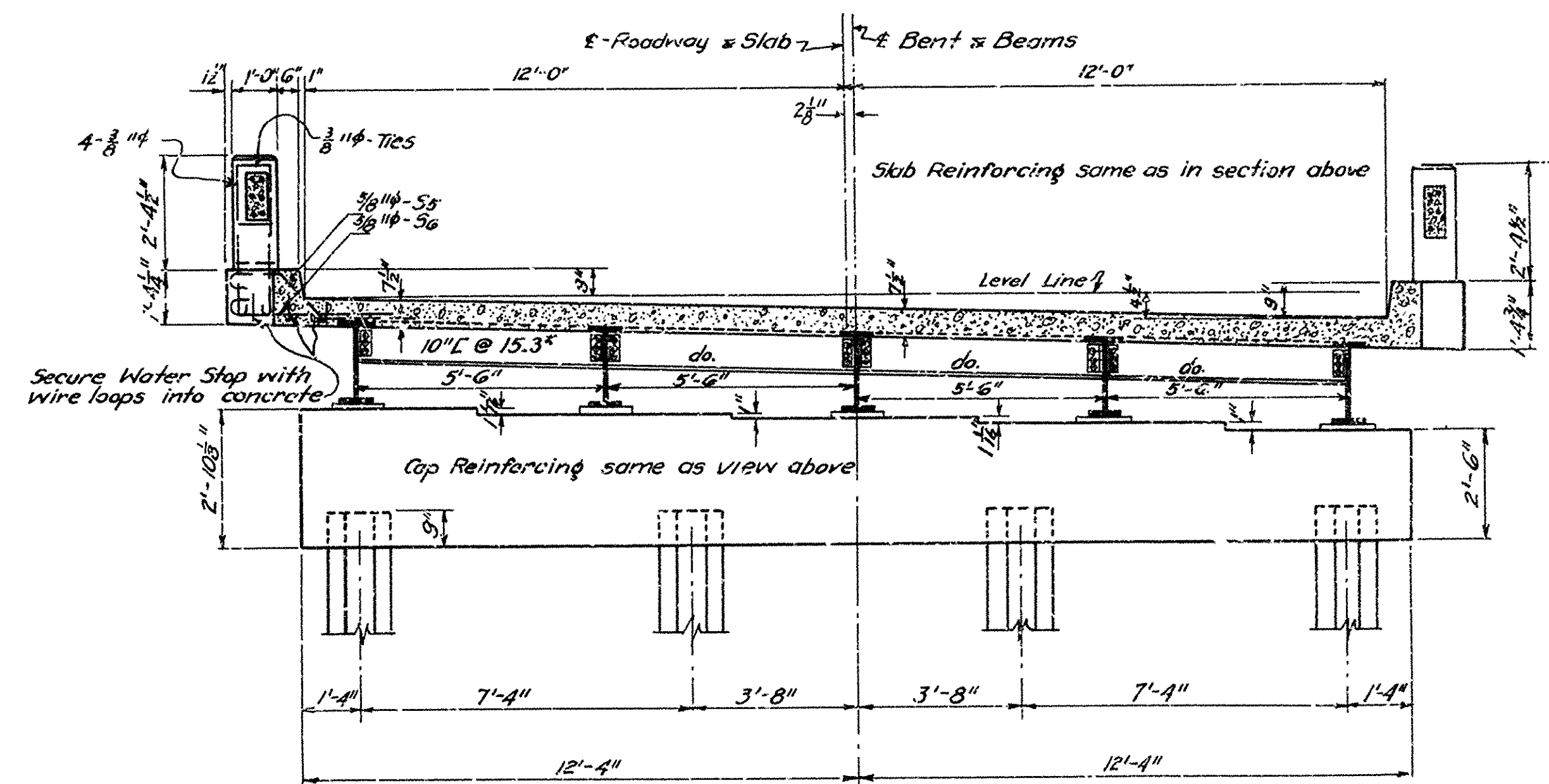


PLAN OF END BENT

NOTE:  
For details of handrailing, drains, piling, bearing plates, beams, bending diagrams and other details, see standard plan for 25'-0" span, drawing no. 2156.



SEC. AT BENT #3



SEC. AT BENTS #2 & #4

Revised P.I.R. as per Designation of Bents Revised 10-3-34

M.B. Lawler  
BRIDGE ENGINEER

DETAILS OF BEAM SPANS FOR  
BRIDGE AT STATION 664 + 50  
HAZEN-ARKANSAS COUNTY LINE ROAD  
PRAIRIE COUNTY  
ROUTE SEC.

ARKANSAS STATE HIGHWAY COMMISSION  
LITTLE ROCK, ARK.

Drawn By: M.W.K. Date: 3-13-34  
Traced By: M.W.K. Date: 3-21-34  
Checked By: Date:  
BRIDGE NO. 1859. DRAWING NO. 3712



